

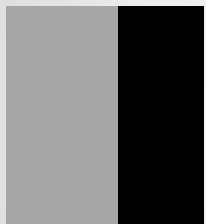


Airways, hila, and mediastinum

The mediastinum—lines, stripes, and borders

What will I gain from this video?

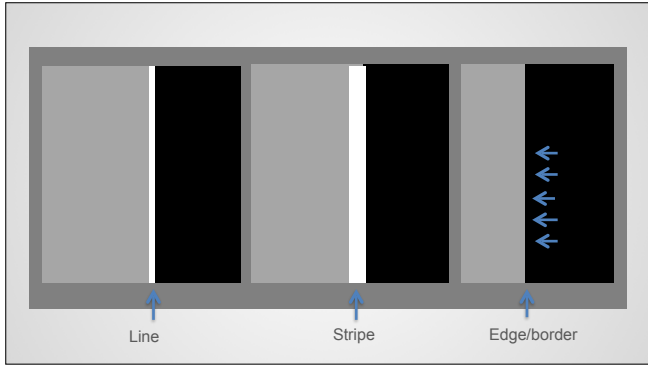
After watching this video, you will be able to identify common lines, stripes, and borders within the mediastinum.



Lung - mediastinum

Trachea - mediastinum

Lung - lung





Central lung-mediastinum interfaces

- Interface related to the aorta—**paraortic stripe**

The chest X-ray in this block has several colored arrows pointing to specific features: a green arrow points to the paraortic stripe (the interface between the lung and the aorta), and three blue arrows point to other interfaces in the central lung-mediastinum region.

Central lung-mediastinum interfaces

- Interface related to the aorta—**paraortic stripe**
- Interface related to the paraspinal soft tissues—**left paraspinal stripe**



Central lung-mediastinum interfaces

- Interface related to the aorta—**paraortic stripe**
- Interface related to the paraspinal soft tissues—**left paraspinal stripe**
- Interface related to the esophagus and the azygos vein—**azygoesophageal recess**



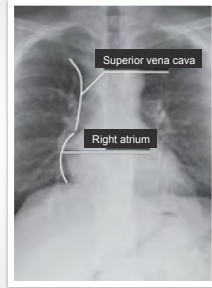
Central lung-mediastinum interfaces

- Interface related to the aorta—**paraortic stripe**
- Interface related to the paraspinal soft tissues—**left paraspinal stripe**
- Interface related to the esophagus and the azygos vein—**azygoesophageal recess**
- Interface related to the aorta and the LPA—**aorto-pulmonary (AP) window**



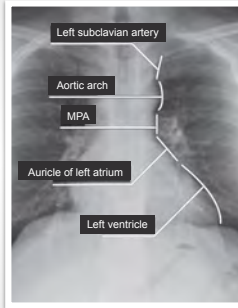
Lateral edges of mediastinum (right)

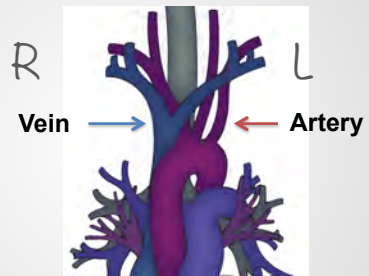
- SVC
- Right atrium



Lateral edges of the mediastinum (left)

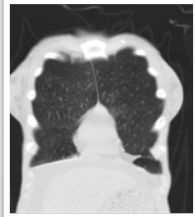
- Left subclavian artery
- Aortic arch
- MPA
- Auricle of left atrium
- Left ventricle





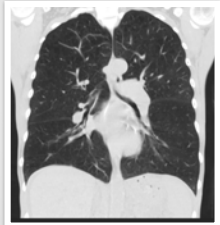
Lung-lung interfaces

Anterior junction line



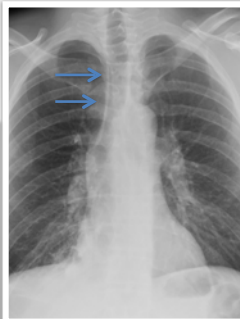
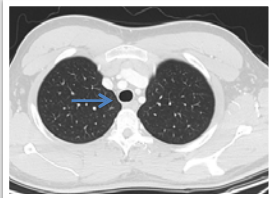
Lung-lung interfaces

Posterior junction line



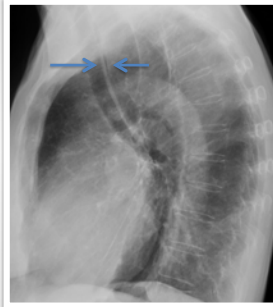
Trachea-mediastinal interfaces

Right paratracheal stripe



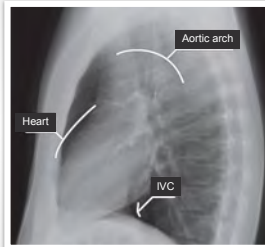
Trachea-mediastinal interfaces

Tracheoesophageal stripe on the lateral



Lateral edges of mediastinum (on the LATERAL)

- Heart
- Aortic arch
- IVC



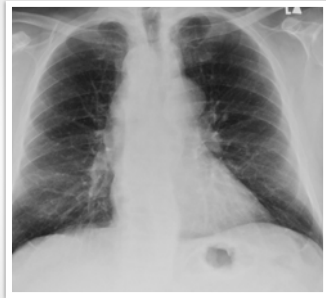
Example case 1



Example case 2



Example case 3



The whiteness of the mediastinum is not a homogeneous white area, but is comprised of interfaces that form edges, lines, and stripes.

Systematic approach to mediastinum requires identification of each of the edges, lines, and stripes.

In a poor quality underpenetrated X-ray, the edges, lines, and stripes can be lost.
